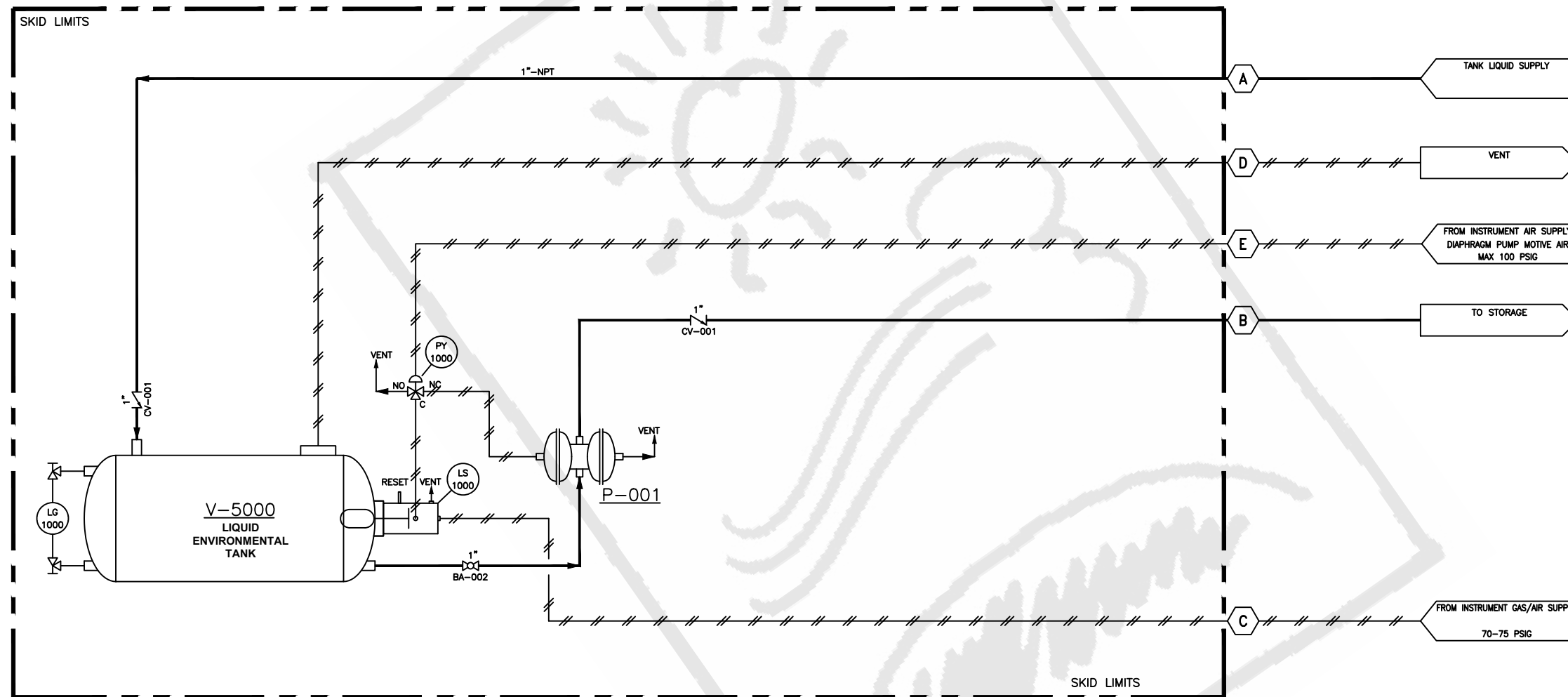


# V-5000

SERVICE: LIQUID ENVIRONMENTAL TANK  
 OD: 12" OD  
 LENGTH: 1'-0 7/8" OAL  
 MATERIAL: SA-414G  
 PRESSURE: 200 PSI MAX

P&ID BILL OF MATERIAL		
QTY	TAG	DESCRIPTION
1	BA-002	1" BALL VALVE STAINLESS FULL-PORT (PA79)
2	CV-001	1" CHECK VALVE STAINLESS (PA83)
1	LG-1000	LEVEL GAUGE COCKS (JM7009 & JM7010)
1	LS-1000	JATCO LEVEL CONTROL (JM7011 SM-P)
1	P-001	1" PNEUMATIC PUMP (J7000DP1)
1	PY-1000	1/4" 3-WAY PILOT VALVE JM5008x



REV	DESCRIPTION	DATE	BY	CHK
1	ADD "GAS" TO CONNECTION C	05/07/28	SWK	--
0	ISSUED FOR CONSTRUCTION	03/05/28	SWK	--

THIS DRAWING AND ITS CONTENTS ARE THE PROPERTY OF JATCO, INC. AND SHALL NOT BE LOANED, REPRODUCED OR DISCLOSED EXCEPT IN ACCORDANCE WITH ITS WRITTEN PERMISSION.



DATE	DRAWN	CHECKED	APPROVED
04/11/23	BT	SWK	----
CLIENT			
TITLE			
SM-P TANK W/PUMP - FULL PNEUMATIC J5000 DP1			
SCALE: AS NOTED		S.O.#	
DRAWING NUMBER		SHEETS	
23105		SHT# 1 OF 1	
		REV	
		1	

LEGEND				
MK	QTY	SIZE	RATING	SERVICE
A	1	1"	150 RF	TANK LIQUID SUPPLY
B	1	1"	150 RF	LIQUID OUTLET
C	1	1/2"	TUBING	INSTRUMENT GAS/AIR SUPPLY
D	1	1/2"	TUBING	VENT
E	1	1/2"	TUBING	DIAPHRAGM PUMP MOTIVE AIR